

Southpoint Plaza

Retail / Office

Restaurant, Medical Centre, Liquor Store
Day Care, Grocery, Dental, Massage, Nail Salon,
Barber Shop, Cannabis

*Adjacent to the New Green Line
Shepard LRT Station*



*Rendering for Illustration Purposes

Mahmud Rahman VP/Associate

P 403.930.8651

E mrahman@blackstonecommercial.com

Randy Wiens Senior Associate

P 403.930.8649

E rwiens@blackstonecommercial.com

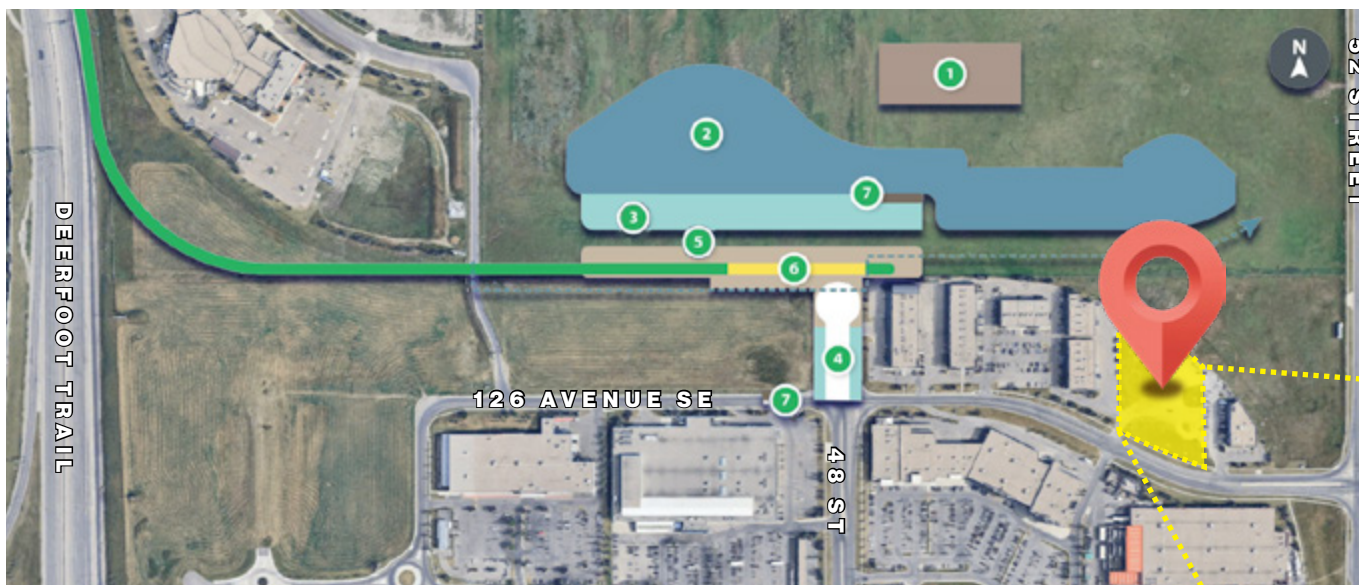
Size Available:	Building 1 - 1 Storey Retail/Office: 14,476 SF • Units: 1,518 SF - 4,968 SF Building 2 - 1 Storey Office: 9,022 SF (Phase II) Building 3 - 2 Storey: 16,821 SF • Units: 1,036 SF - 6,800 SF
Availability:	Completion Q4 2026 (Est.)
Net Rate:	Market
Op Costs:	\$17.00 PSF (Est. 2026)
Property Taxes:	TBD
Zoning:	Industrial Commercial (I-C) District
Signage:	Fascia & Pylon
Building Size:	39,646 SF (Total)
Land Size:	2.63 acres
Parking:	97 Stalls

HIGHLIGHTS

- **Located near South Trail Crossing**, Calgary's largest SE power centre with top national retailers
- **Adjacent to Home Depot**, steps from McDonald's, Goodlife, Indigo, Lina's, and more
- **High exposure off 52 Street** with **8,500 VPD** at 52 Street SE; easy access to Stoney Trail
- **Walkable to future Green Line LRT** (Shepard Station)
- **Surrounded by major anchors** including Walmart, RONA, Safeway, and Pro Hockey Life
- **Ideal for retail or office use** – grocery, pharmacy, medical, wellness, cannabis, liquor, and more
- **Thriving trade area** with dense residential and strong daily traffic



Green Line + Southpoint Plaza Locations



UNIT SIZE

Building 1 - 14,476 SF

Unit 1 - 4,968 SF

Unit 2 - 1,518 SF

Unit 3 - 1,518 SF

Unit 4 - 1,518 SF

Unit 5 - 1,518 SF

Unit 6 - 1,518 SF

Unit 7 - 1,918 SF

Building 3 - 16,821 SF

Unit 1 - 2,682 SF

Unit 2 - 1,200 SF

Unit 3 - 1,200 SF

Unit 4 - 1,039 SF

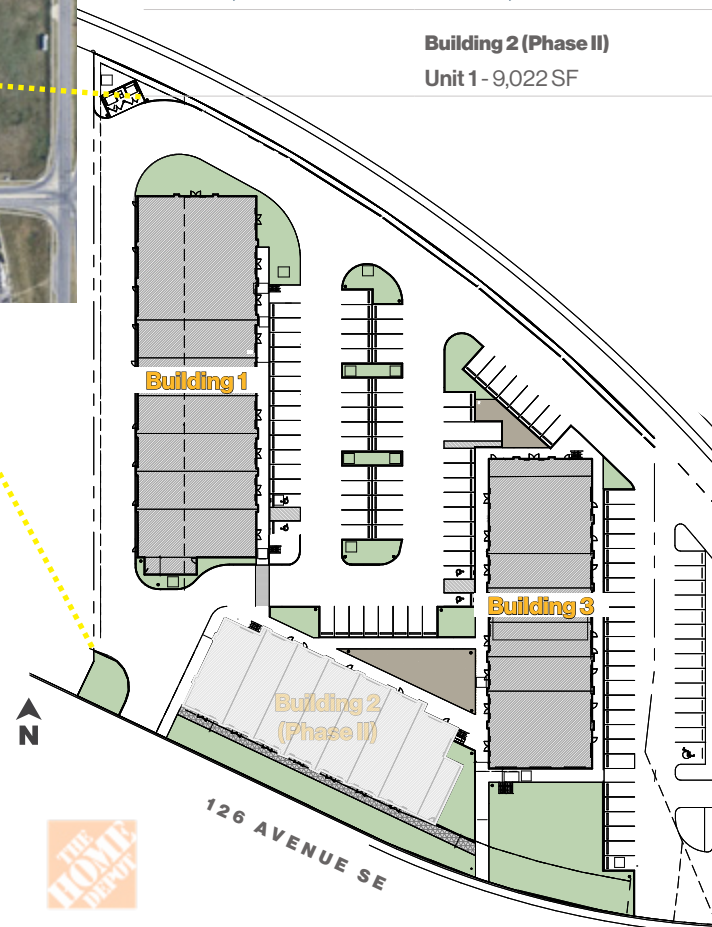
Unit 5 - 1,200 SF

Unit 6 - 2,700 SF

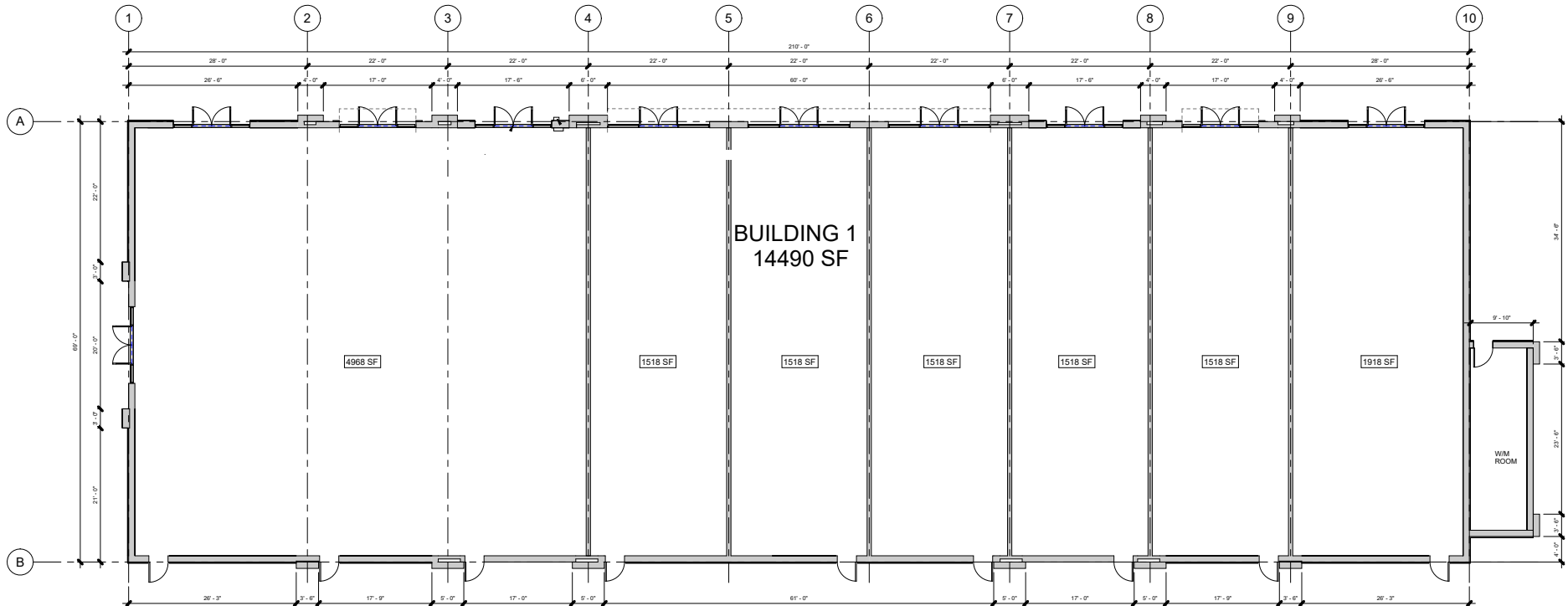
Unit 7 - 6,800 SF *2nd Floor*

Building 2 (Phase II)

Unit 1 - 9,022 SF



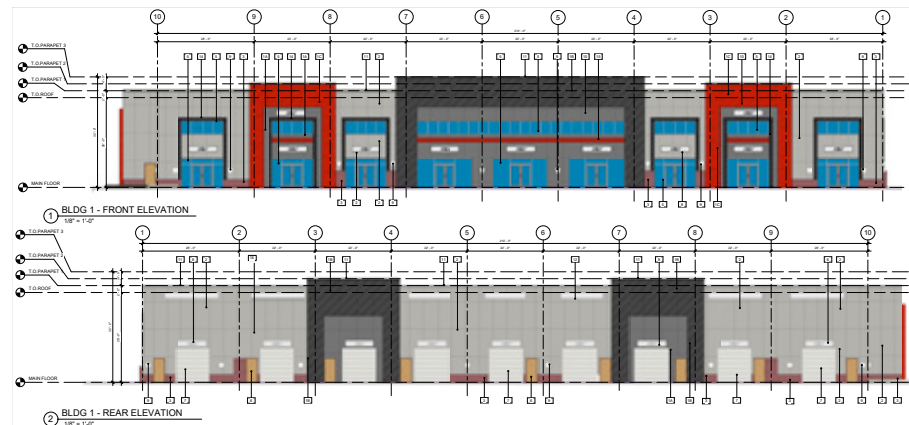
- ① Maintenance and storage facility
- ② Park and Ride with approximately 920 stalls
- ③ North bus terminal
- ④ South bus terminal
- ⑤ Plaza
- ⑥ Station/platform
- ⑦ Passenger pick-up/drop off areas (2)

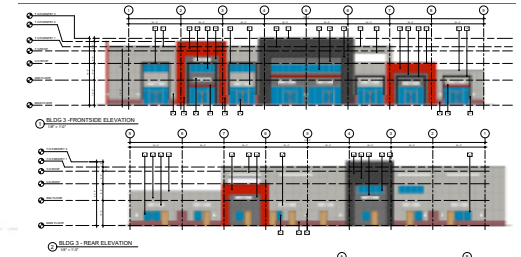
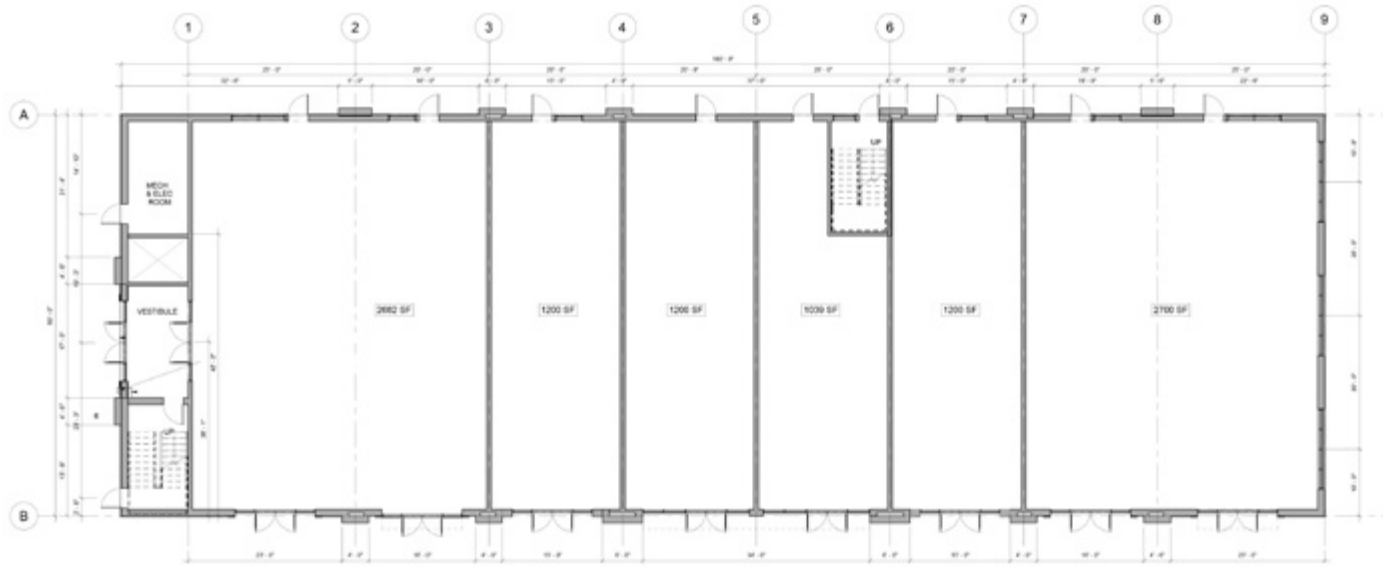


1 BLDG 1 - MAIN FLOOR PLAN
1/8" = 1'-0"

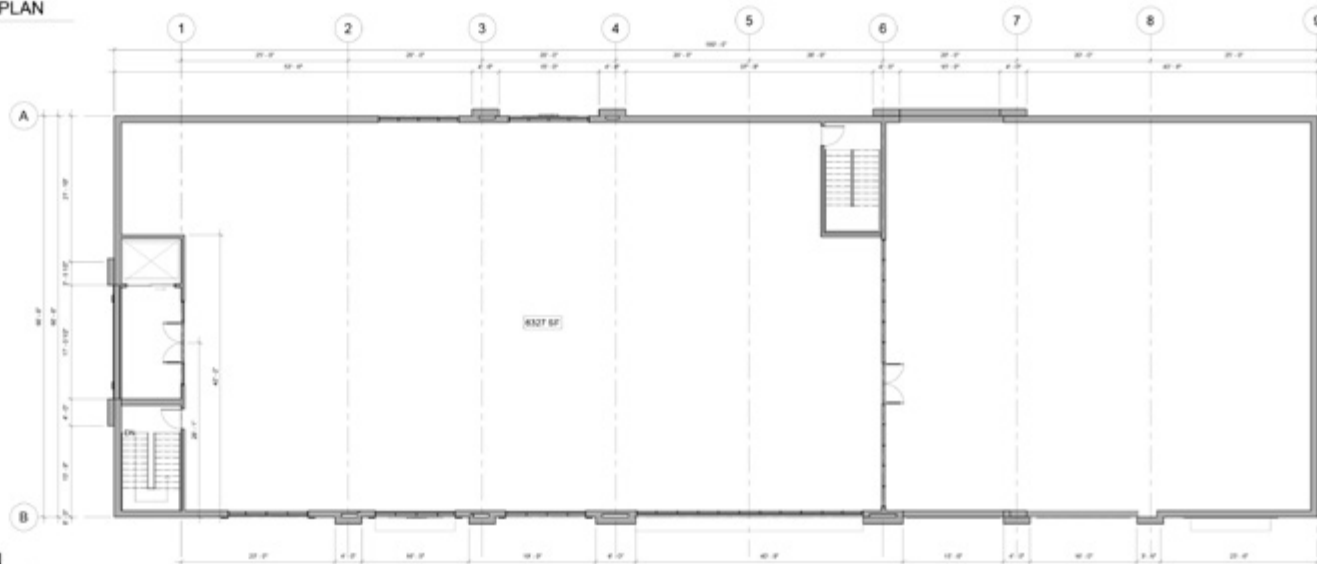
UNIT SIZE

Building 1
Unit 1 - 4,968 SF
Unit 2 - 1,518 SF
Unit 3 - 1,518 SF
Unit 4 - 1,518 SF
Unit 5 - 1,518 SF
Unit 6 - 1,518 SF
Unit 7 - 1,918 SF





1 BLDG 3- MAIN FLOOR PLAN
1/8" = 1'-0"



2 BLDG 3- SECOND FLOOR PLAN
1/8" = 1'-0"

UNIT SIZE

Building 3

Unit 1 - 2,682 SF

Unit 2 - 1,200 SF

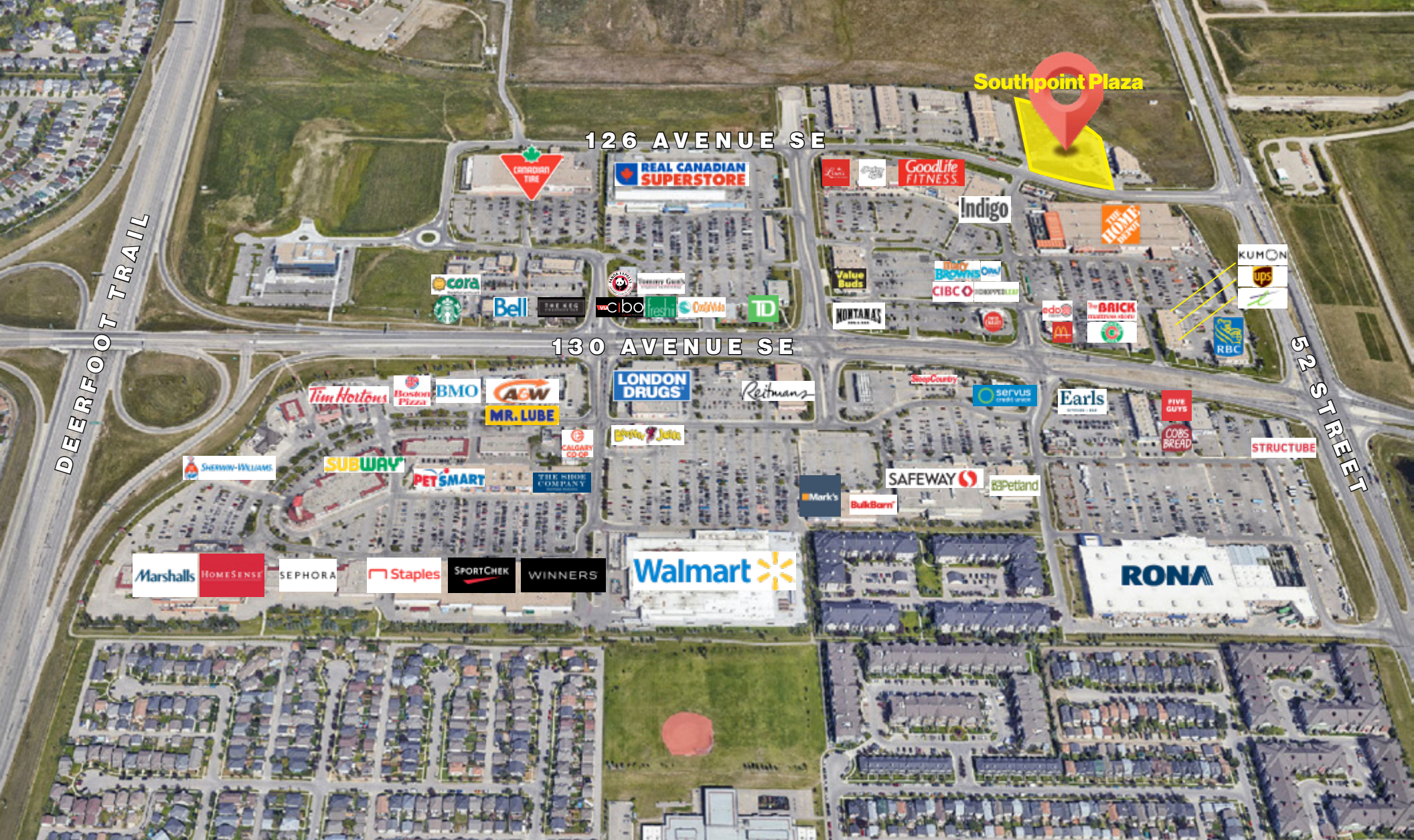
Unit 3 - 1,200 SF

Unit 4 - 1,039 SF

Unit 5 - 1,200 SF

Unit 6 - 2,700 SF

Unit 7 - 6,800 SF **2nd Floor**



NEIGHBORHOOD
Mackenzie



POPULATION
3KM
57,512



MEDIAN AGE
37.7



HOUSEHOLD INCOME
\$109,042



TRAFFIC COUNT
115,000 VPD
Deerfoot & 130 Ave SE

Mahmud Rahman VP /Associate

P 403.930.8651

E mrahman@blackstonecommercial.com

Randy Wiens Senior Associate

P 403.930.8649

E rwiens@blackstonecommercial.com

Thank you for your Interest



BlackstoneCommercial.com

This document has been prepared by Blackstone Commercial for advertising and general information only. Although information has been obtained from sources deemed reliable, Blackstone Commercial and / or their representatives, brokers or agents make no guarantees, representations or warranties of any kind, expressed or implied, regarding the information including, but not limited to, warranties of content, accuracy and reliability. Blackstone Commercial excludes unequivocally all inferred or implied terms, conditions and warranties arising out of this document and excludes all liability for loss and damages arising therefrom. © 2025, All rights reserved. This document is the copyrighted property of Blackstone Commercial.



Mahmud Rahman *VP /Associate*

P 403.930.8651

E mrahman@blackstonecommercial.com



Randy Wiens *Senior Associate*

P 403.930.8649

E rwiens@blackstonecommercial.com