



Craig McGinley, *VP Retail Leasing*

P 403.483.4785

E cmcginley@blackstonecommercial.com

Patrick White *Associate*

P 403.214.2344

E pwhite@blackstonecommercial.com

Section A

Unit 100 - **138** SF - Wireless Hub
 Unit 101 - **504** SF - Dhezigne
 Unit 105 - **424** SF - Sunglass Plus
 Unit 106A - **212** SF - **Available**
 Unit 106B - **219** SF - **Available**
 Unit 107 - **256** SF - **Available**
 Unit 109 - **194** SF - SL Leased
 Unit 111 - **242** SF - SL Leased
 Unit 115 - **449** SF - Leased
 Unit 117 - **1,199** SF - Divine Nails
 Unit 119 - **782** SF - Tim Horton's
 Unit 121 - **1,024** SF - Roger's Plus
 Unit 125 - **3,700** SF - Altitude Clothing
 Unit 127 - **882** SF - Silverstone Accessories
 Unit 129 - **2,300** SF - **Available**
 Unit 131 - **2,673** SF - Stuffy Riders
 Unit 135 - **2,333** SF - **Available**
 Unit 139-141 - **3,326** SF - Family Medical

Section B

Unit 165 - **4,956** SF - Bluenotes
 Unit 167 - **3,018** SF - Cleo
 Unit 169 - **5,137** SF - Ricki's /Bootlegger
 Unit 171 - **4,099** SF - The Shoe Company
 Unit 902 - **1,014** SF - Real Care Massage
 Unit 905 - **3,159** SF - AB College of Massage
 Unit 906 - **1,082** SF - Real Care Massage
 Unit 910 - **1,478** SF - Claims Pro
 Unit 915 - **2,631** SF - Red Deer Healing
 Unit 924 - **736** SF - Helping Hands
 Dock - **21,325** SF - **Available**

Section C

Unit 177 - **84** SF - **Available**
 Unit 178 - **785** SF - Eyebrow Studio
 Unit 179 - **3,251** SF - Home Design
 Unit 183 - **2,797** SF - **Available**
 Unit 187 - **2,795** SF - Sepend
 Unit 191 - **1,395** SF - Showcase
 Unit 195 - **3,963** SF - Fairweather
 Unit 199 - **1,612** SF - **Available**
 Unit 205 - **2,132** SF - Classic Touch Boutique
 Unit 209 - **242** SF - SL Leased
 Unit 211A - **1,733** SF - Storage

Section D

Unit 211 - **14,752** SF - Staples
 Unit 219 - **1,304** SF - TELUS
 Unit 221 - **764** SF - BestBuy Mobile
 Unit 223 - **1,194** SF - **Available**
 Unit 225 - **1,093** SF - **Available**
 Unit 227 - **500** SF - We Sew Right
 Unit 241 - **2,088** SF - **Available**
 Unit 247 - **1,005** SF - HKP Feel the Fun
 Unit 251 - **737** SF - RD Denture Clinic
 Unit 253 - **3,004** SF - **Available**

Section E

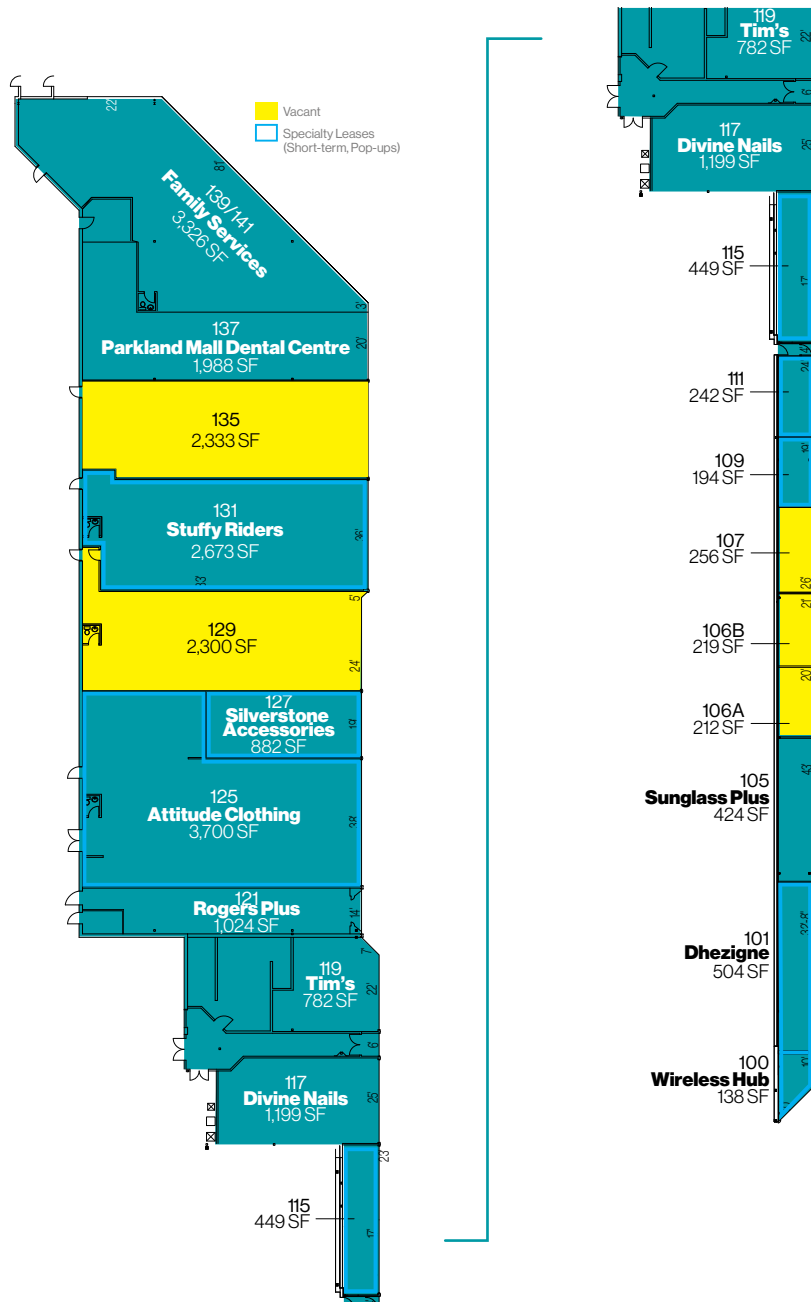
Unit 300 - **633** SF - The Golden Touch
 Unit 302 - **633** SF - The Golden Touch
 Unit 304 - **925** SF - Shoe Chalet
 Unit 308 - **2,437** SF - Tuff & Tender
 Unit 310 - **971** SF - Game Stop
 Unit 312 - **803** SF - Adam & Eve Unisex
 Unit 316 - **1,761** SF - Craze Mania
 Unit 346 - **2,840** SF - Dream Garage
 Unit 342 - **2,373** SF - Sacred
 Unit 348/400 - **5,214** SF - Stitches
 Unit 404 - **2,043** SF - Veterans Museum
 Unit 412 - **9,424** SF - Dollarama
 Unit 420 - **934** SF - **Available**
 Unit 422 - **466** SF - **Available**
 Unit 424 - **653** SF - **Available**
 Unit 425 - **634** SF - Train Pay Station
 Unit 426 - **915** SF - Custom T's
 Unit 432 - **762** SF - **Available**
 Unit 434 - **810** SF - **Available**
 Unit 444 - **2,339** SF - Roddies Creations
 Unit 448 - **1,257** SF - Kiddie Rides
 Unit 456 - **2,751** SF - Tip Top Tailors
 Unit 460 - **1,899** SF - The Bear House
 Unit 464 - **1,700** SF - **Available**
 Unit 468 - **1,700** SF - **Available**

Section F - Food Court

Unit 500 - **190** SF - Crepes & Waffles
 Unit 502 - **328** SF - Eka Japan
 Unit 504 - **399** SF - Grand House Restaurant
 Unit 506 - **400** SF - RD Buffet Express
 Unit 508 - **400** SF - Taco Time
 Unit 510 - **459** SF - **Available**
 Unit 512 - **211** SF - New York Fries
 Unit 514 - **212** SF - **Available**
 Unit 516 - **405** SF - Subway

Section G

Unit 254 - **1,620** SF - HKP Feel the Sun
 Unit 255 - **1,646** SF - Bell
 Unit 265 - **885** SF - Suzy Elegance
 Unit 267 - **3,958** SF - Lamml's
 Unit 275 - **934** SF - L-Style
 Unit 281 - **3,044** SF - **Available**
 Unit 283 - **622** SF - Sheffield & Sons

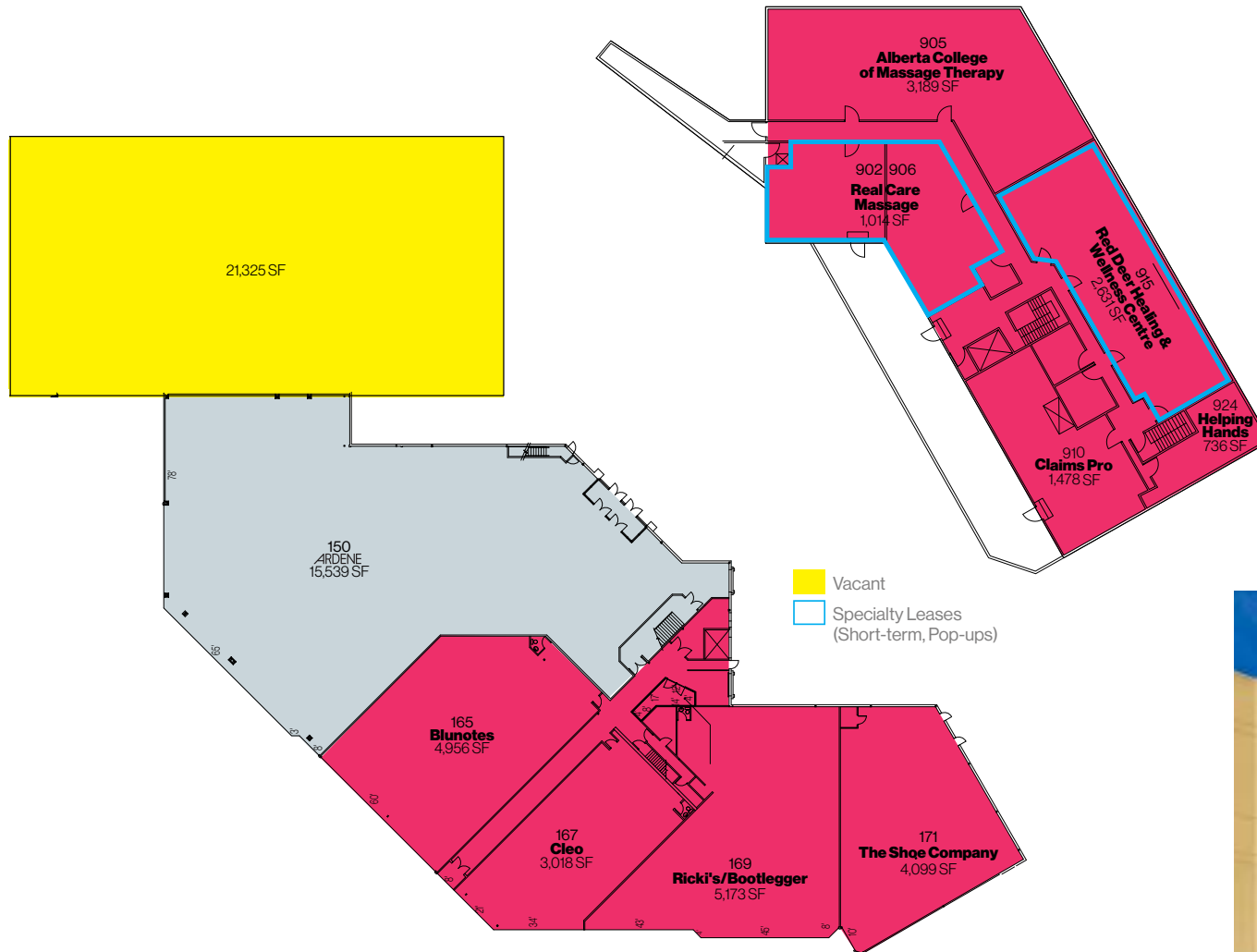


Section A

- Unit 100 - 138 SF - Wireless Hub
- Unit 101 - 504 SF - Dhezigne
- Unit 105 - 424 SF - Sunglass Plus
- Unit 106A - 212 SF - **Available**
- Unit 106B - 219 SF - **Available**
- Unit 107 - 256 SF - **Available**
- Unit 109 - 194 SF - SL Leased
- Unit 111 - 242 SF - SL Leased
- Unit 115 - 449 SF - Leased
- Unit 117 - 1,199 SF - Divine Nails
- Unit 119 - 782 SF - Tim Horton's
- Unit 121 - 1,024 SF - Roger's Plus
- Unit 125 - 3,700 SF - Altitude Clothing
- Unit 127 - 882 SF - Silverstone Accessories
- Unit 129 - 2,300 SF - **Available**
- Unit 131 - 2,673 SF - Stuffy Riders
- Unit 135 - 2,333 SF - **Available**
- Unit 139-141 - 3,326 SF - Family Medical



Second Level Office Mezzanine



Section B

- Unit 165 - **4,956 SF** - Blunotes
- Unit 167 - **3,018 SF** - Cleo
- Unit 169 - **5,137 SF** - Ricki's /Bootlegger
- Unit 171 - **4,099 SF** - The Shoe Company
- Unit 902 - **1,014 SF** - Real Care Massage
- Unit 905 - **3,159 SF** - AB College of Massage
- Unit 906 - **1,082 SF** - Real Care Massage
- Unit 910 - **1,478 SF** - Claims Pro
- Unit 915 - **2,631 SF** - Red Deer Healing
- Unit 924 - **736 SF** - Helping Hands
- Dock - **21,325 SF** - *Available*





Section C

Unit 177 - **84 SF** - **Available**

Unit 178 - **785 SF** - Eyebrow Studio

Unit 179 - **3,251 SF** - Home Design

Unit 183 - **2,797 SF** - **Available**

Unit 187 - **2,795 SF** - Sepend

Unit 191 - **1,395 SF** - Showcase

Unit 195 - **3,963 SF** - Fairweather

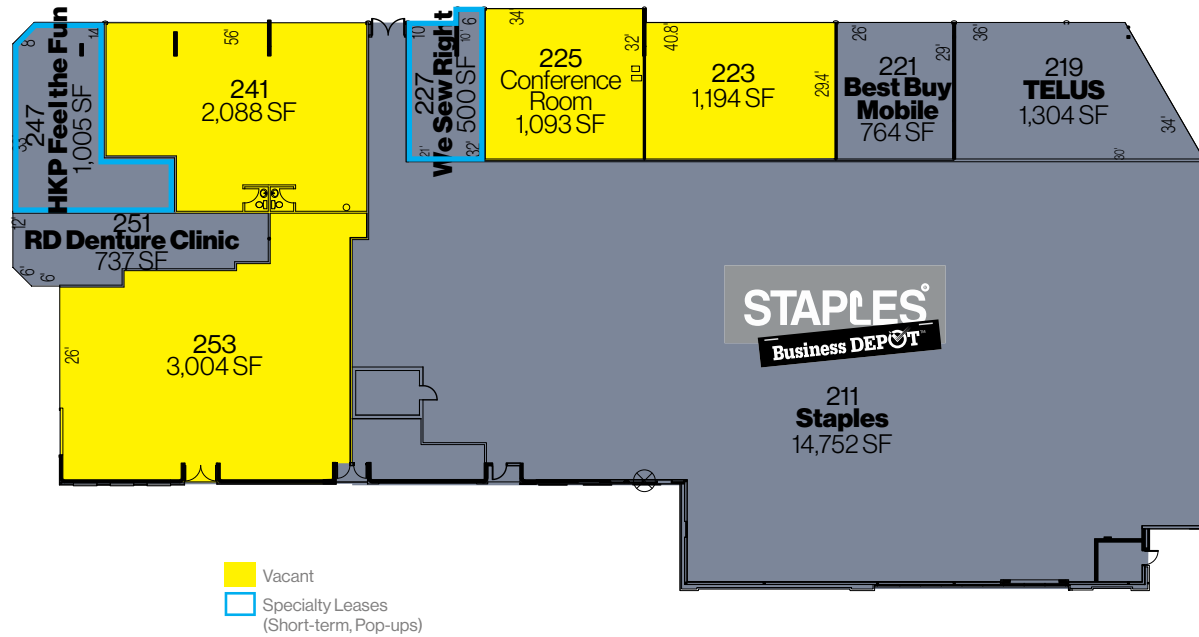
Unit 199 - **1,612 SF** - **Available**

Unit 205 - **2,132 SF** - SL Leased

Unit 209 - **242 SF** - SL Leased

Unit 211A - **1,733 SF** - Storage

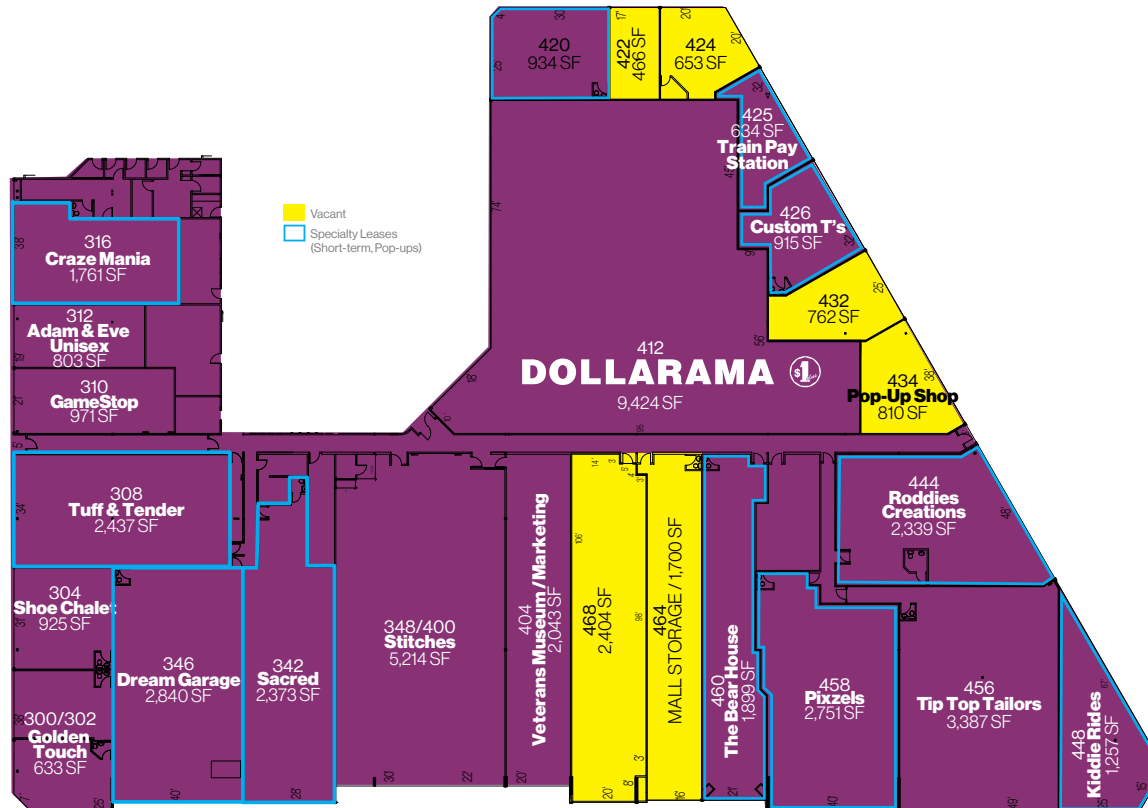




Section D

- Unit 211 - **14,752 SF** - Staples
- Unit 219 - **1,304 SF** - TELUS
- Unit 221 - **764 SF** - BestBuy Mobile
- Unit 223 - **1,194 SF** - **Available**
- Unit 225 - **1,093 SF** - **Available**
- Unit 227 - **500 SF** - We Sew Right
- Unit 241 - **2,088 SF** - **Available**
- Unit 247 - **1,005 SF** - HKP Feel the Fun
- Unit 251 - **737 SF** - RD Denture Clinic
- Unit 253 - **3,004 SF** - **Available**





Section E

Unit 300 - **633** SF - The Golden Touch

Unit 302 - **633** SF - Leased

Unit 304 - **925** SF - Shoe Chalet

Unit 308 - **2,437** SF - Tuff & Tender

Unit 310 - **971** SF - Game Stop

Unit 312 - **803** SF - Adam & Eve Unisex

Unit 316 - **1,761** SF - Craze Mania

Unit 346 - **2,840** SF - Dream Garage

Unit 342 - **2,373** SF - Sacred

Unit 348/400 - **5,214** SF - Stitches

Unit 404 - **2,043** SF - Veterans Museum

Unit 412 - **9,424** SF - Dollarama

Unit 420 - **934** SF - **Available**

Unit 422 - **466** SF - **Available**

Unit 424 - **653** SF - **Available**

Unit 425 - **634** SF - Train Pay Station

Unit 426 - **915** SF - Custom T's

Unit 432 - **762** SF - **Available**

Unit 434 - **810** SF - **Available**

Unit 444 - **2,339** SF - Roddies Creations

Unit 448 - **1,257** SF - Kiddie Rides

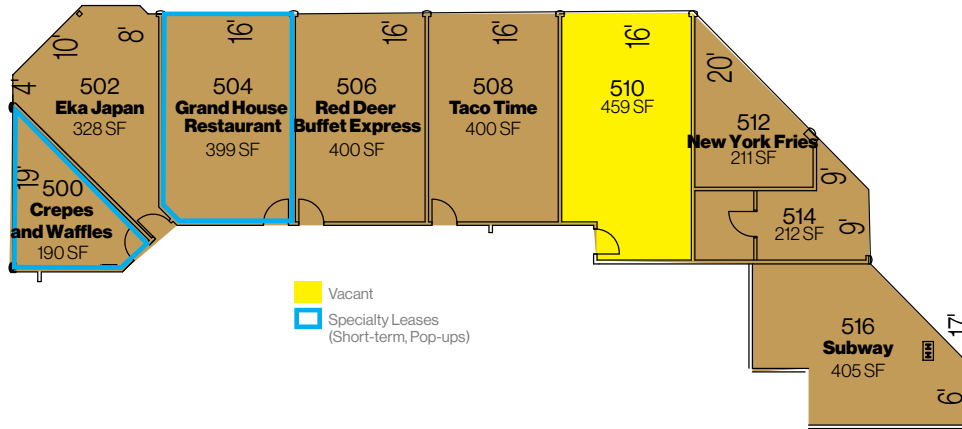
Unit 456 - **2,751** SF - Tip Top Tailors

Unit 460 - **1,899** SF - The Bear House

Unit 464 - **1,700** SF - **Available**

Unit 468 - **1,700** SF - **Available**





Section F - Food Court

Unit 500 - 190 SF - Crepes & Waffles

Unit 502 - 328 SF - Eka Japan

Unit 504 - 399 SF - Grand House Restaurant

Unit 506 - 400 SF - RD Buffet Express

Unit 508 - 400 SF - Taco Time

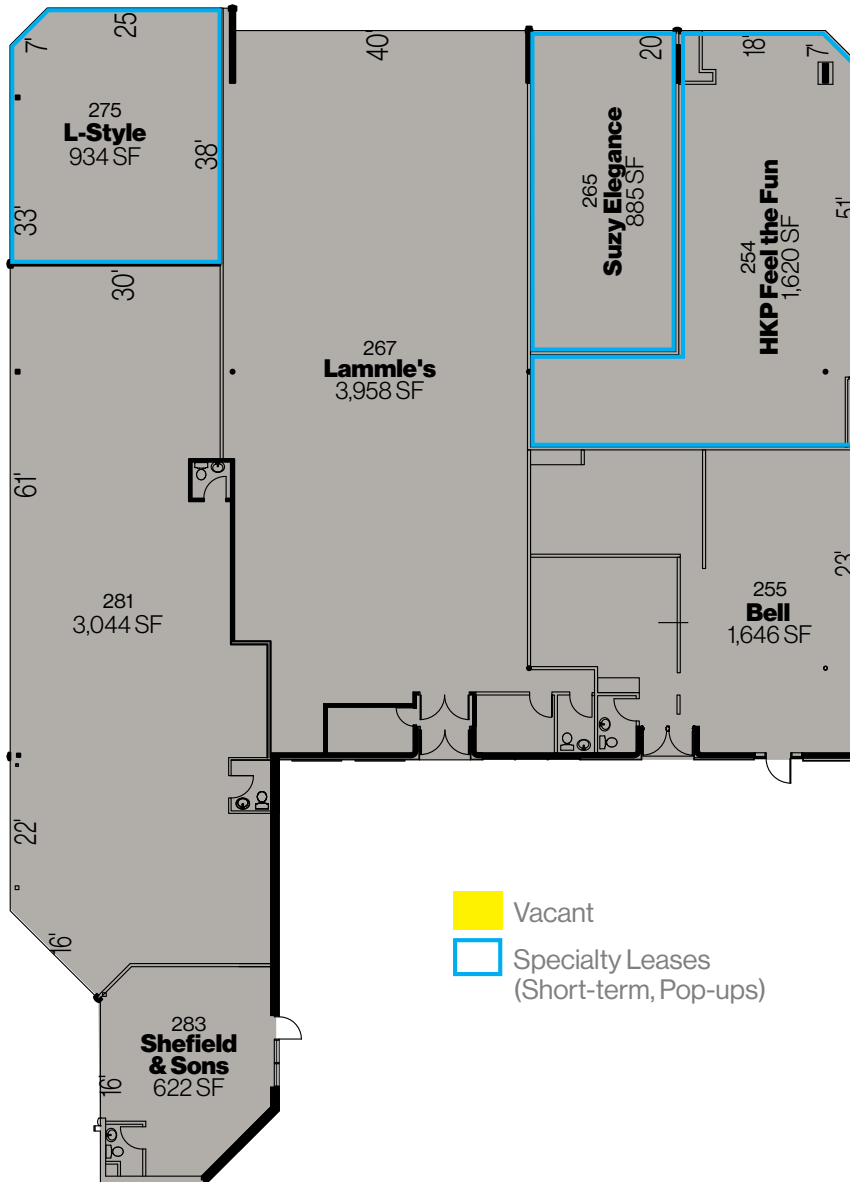
Unit 510 - 459 SF - **Available**

Unit 512 - 211 SF - New York Fries

Unit 514 - 212 SF - **Available**

Unit 516 - 405 SF - Subway





- Vacant
- Specialty Leases
(Short-term, Pop-ups)

Section G

Unit 254 - **1,620** SF - HKP Feel the Sun

Unit 255 - **1,646** SF - Bell

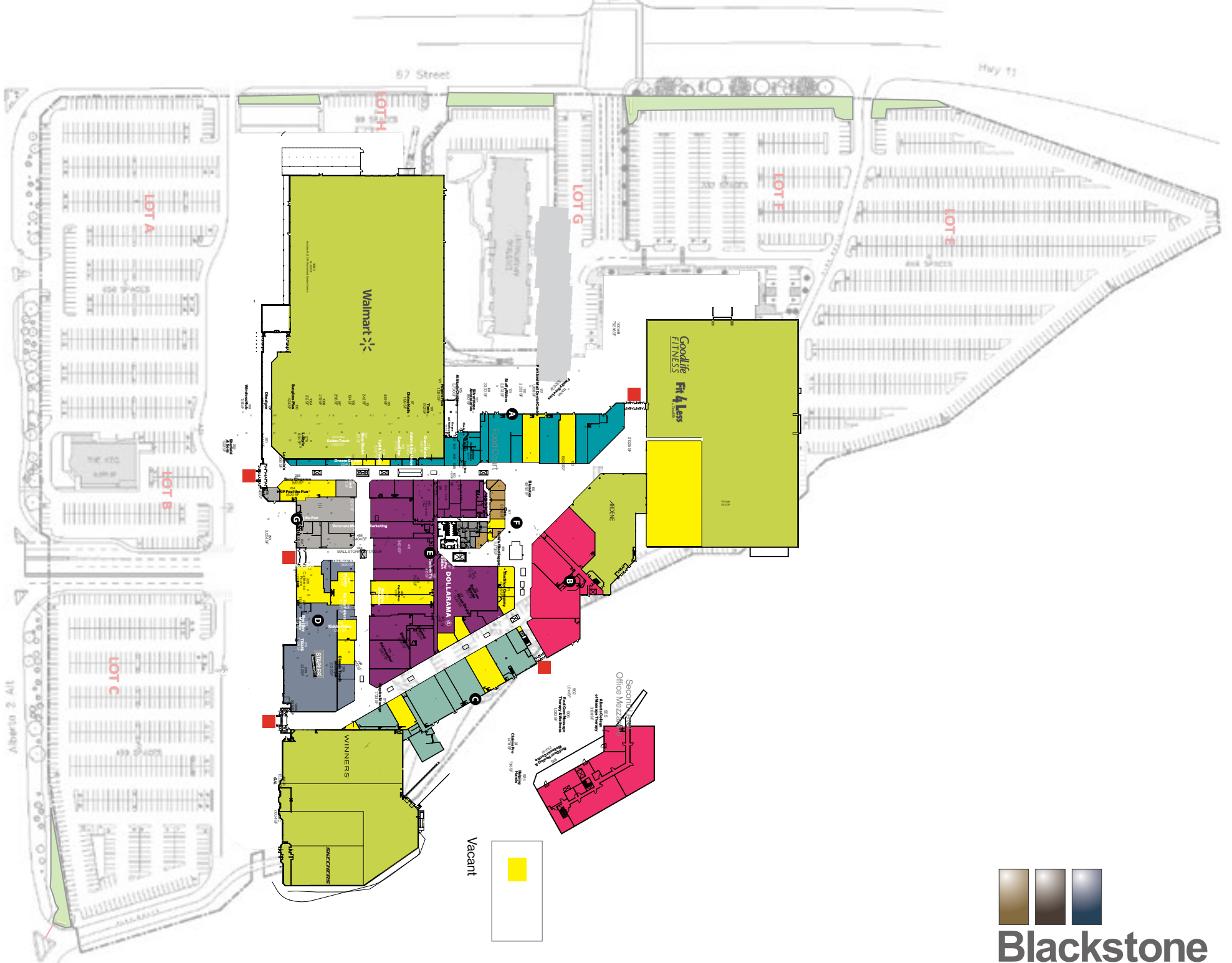
Unit 265 - **885** SF - Suzy Elegance

Unit 267 - **3,958** SF - Lammle's

Unit 275 - **934** SF - L-Style

Unit 281 - **3,044** SF - **Available**

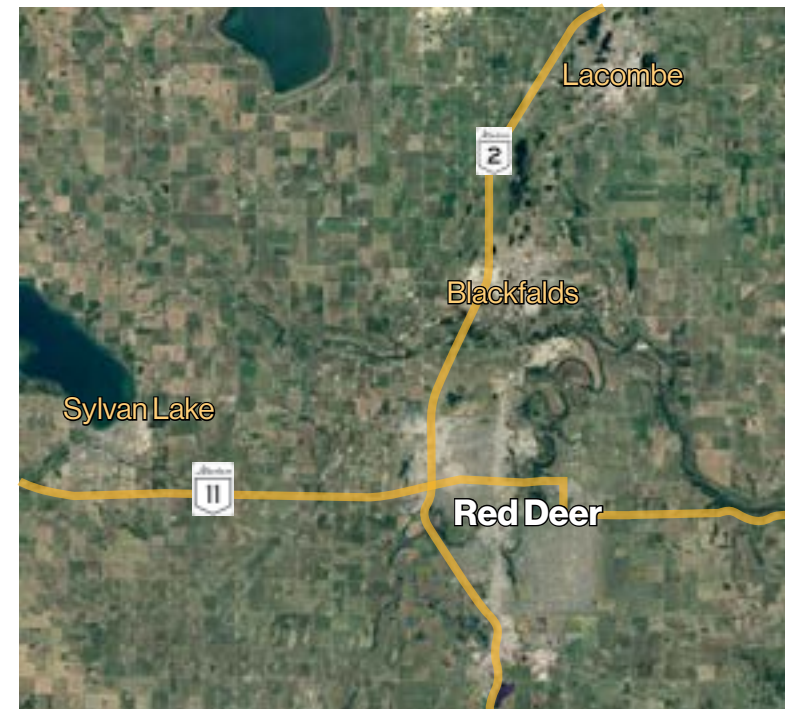
Unit 283 - **622** SF - Sheffield & Sons





DEMOGRAPHICS

DEMOGRAPHICS	POPULATION	MEDIAN AGE	HOUSEHOLD INCOME	TRAFFIC COUNT VEHICLES PER DAY
Red Deer	137,839	38	\$114,181	12,000: Gaetz Ave & 67 ST
Greater Red Deer Region <i>Red Deer, Sylvan Lake, Blackfalds, Lacombe</i>	162,042	38.2	\$123,807	60,620: Hwy 2 & Hwy 11



54,074

HOUSEHOLDS

69.9%

LABOUR FORCE PARTICIPATION RATE

\$4,201

AVERAGE SPEND HOUSEHOLD: FURNISHINGS

\$74.9%

STURCTURE TYPE HOUSE

17.8%

UNIVERSITY EDUCATED

\$12,889

AVERAGE SPEND PER HOUSEHOLD: FOOD

\$3,609

AVERAGE SPEND HOUSEHOLD: CLOTHING

\$67.2%

TENURE TYPE OWNED

ZONING C-4 (Major Arterial Commercial Zone)

AMENITIES & FEATURES Loading Dock, Storage Available, On-site Security, Ample Parking

SIGNAGE Pylon, Facade, Mall Directory, Limited Availability

NET RATE Market - Incentives Available

MALL FOOT TRAFFIC 2,083,700 Annual Mall Visitors

ANCHORTENANTS Walmart | The Keg | Goodlife Fitness/Fit4Less
 Winners | Ardene | Staples | Skechers | Lammlé's | Dollarama

Thank you for your Interest



[BlackstoneCommercial.com](https://www.blackstonecommercial.com)

A210, 9705 Horton Road SW, Calgary, Alberta T2V 2X5 | P 403.214.2344

This document has been prepared by Blackstone Commercial for advertising and general information only. Although information has been obtained from sources deemed reliable, Blackstone Commercial and / or their representatives, brokers or agents make no guarantees, representations or warranties of any kind, expressed or implied, regarding the information including, but not limited to, warranties of content, accuracy and reliability. Blackstone Commercial excludes unequivocally all inferred or implied terms, conditions and warranties arising out of this document and excludes all liability for loss and damages arising therefrom. © 2025, All rights reserved. This document is the copyrighted property of Blackstone Commercial.



Craig McGinley, *VP Retail Leasing*

P 403.483.4785

E cmcginley@blackstonecommercial.com



Patrick White *Associate*

P 403.214.2344

E pwhite@blackstonecommercial.com