

Northpointe Crossing



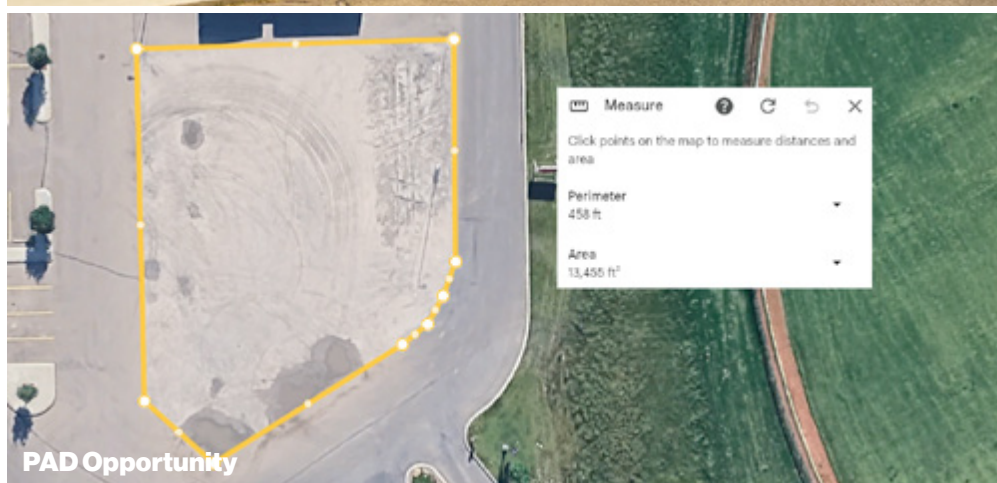
Full Commission (5%)

Paid to Outside Agent on 5-year Term

Paul Ramikie ccim

Senior Associate / Associate Broker

Cell **403.607.7375** (Call or Text)



Size Available

CRU: 1,100 SF – 4,511 SF

PAD Opportunity / Land Lease: 13,455 SF

Availability

Immediately

Net Rate

Market

Op Costs

\$13.32 PSF (Est. 2025)

Zoning

Mixed-use

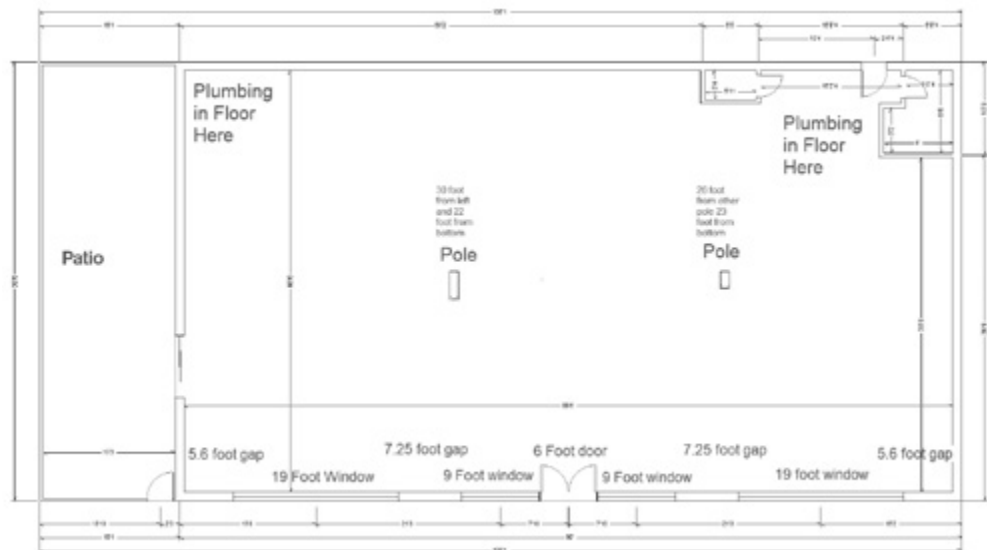
Parking

Ample / open

Highlights

- High-visibility end-cap in Northpointe Crossing
- Units from 1,100 – 4,511 SF with patio potential
- 13,000 SF PAD – land lease or build-to-suit (gas station, motel, hotel)
- Anchored by Shoppers Drug Mart + shadow-anchored by Co-op
- Next to Big Marble Go Centre + strong family traffic
- Excellent access to Highway 1/Trans-Canada
- Surrounded by 17,000+ residents with avg. incomes \$93K+
- Delivered in vanilla shell with tenant improvement support





Ceiling Height: 17'

Some unit heaters drop down, those spots - 12'

Paul Ramikie ccim

Senior Associate / Associate Broker

Cell 403.607.7375 (Call or Text)





NEIGHBORHOOD
Medicine Hat



POPULATION
3KM
17,367



MEDIAN AGE
42.1



HOUSEHOLD INCOME
\$70,863



TRAFFIC COUNT
21,660 VPD | Trans-Canada & Boxsprings Rd

Paul Ramikie ccm

Senior Associate /Associate Broker

Cell **403.607.7375** (Call or Text)

This document has been prepared by Alliance West for advertising and general information only. Although information has been obtained from sources deemed reliable, Alliance West and/or their representatives, brokers or agents make no guarantees, representations or warranties of any kind, expressed or implied, regarding the information including, but not limited to, warranties of content, accuracy and reliability. Alliance West excludes unequivocally all inferred or implied terms, conditions and warranties arising out of this document and excludes all liability for loss and damages arising therefrom. © 2025, All rights reserved. This document is the copyrighted property of Alliance West.

Unit A210
9705 Horton Road SW
Calgary, Alberta T2V 2X5
P 403.214.2344
AWAPM.com