

# For Lease

6219 Centre Street NW | Calgary, AB



## Demographics *(within 3 km)*



NEIGHBORHOOD  
Simons Valley



POPULATION  
48,683



MEDIAN AGE  
40



HOUSEHOLD INCOME  
\$74,081

## Building Details



PARKING  
Ample



YEAR BUILT  
2000



TRAFFIC COUNT

29,000 VPD | 64 Ave. NE & Huntridge Hill NE  
18,000 VPD | Centre St. & Thistle Place NE S

# Blackstone

Unit A210, 9705 Horton Road SW,  
Calgary, Alberta, T2V 2X5  
P (403) 214-2344

[blackstonecommercial.com](http://blackstonecommercial.com)

## Simons Valley Square

### Property Details

Size Available: Unit 10 - 2,289 SF

Availability: Immediately

Net Rate: Market

Op Costs: \$15.90 PSF (2024)

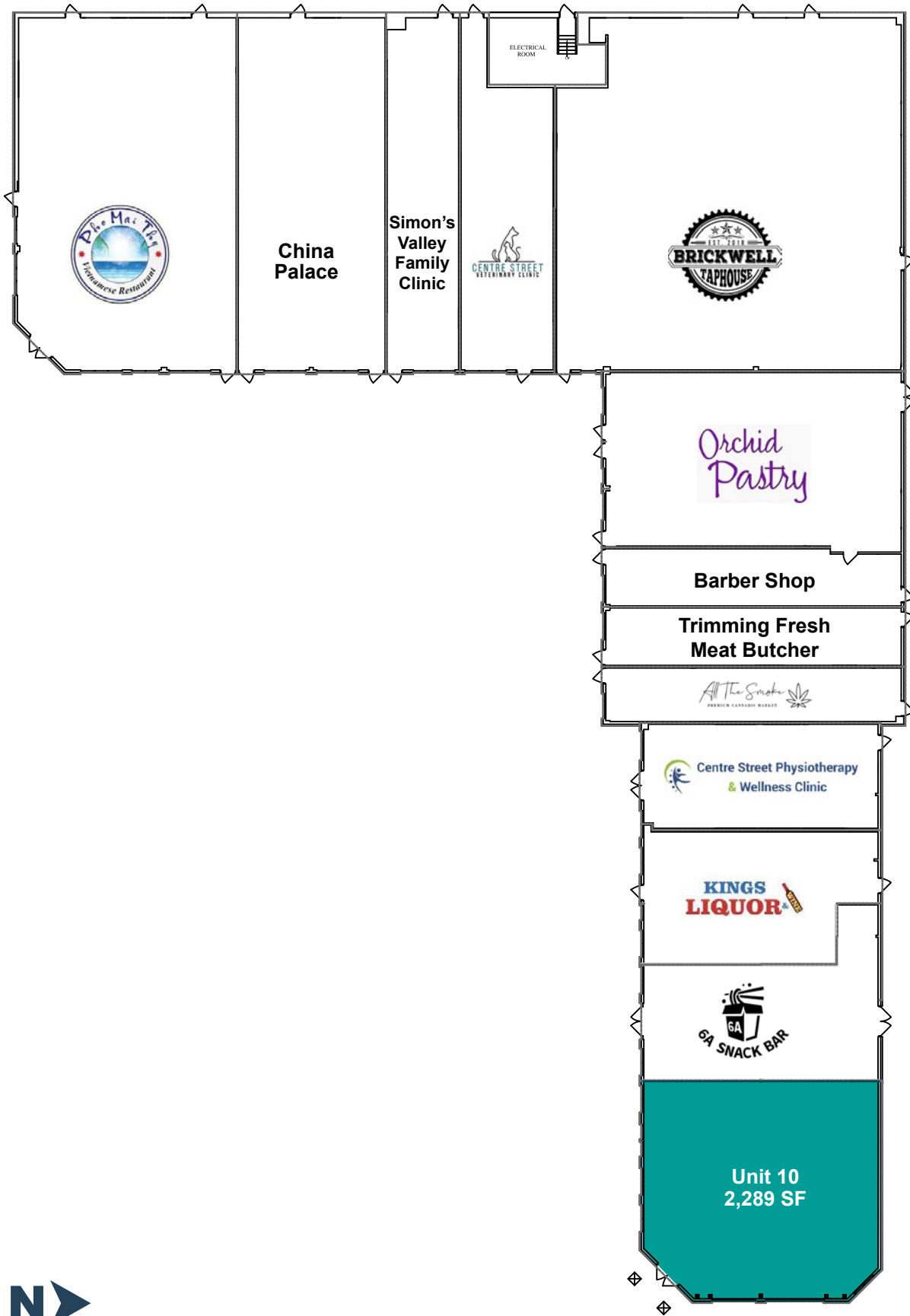
Utilities: Separately metered

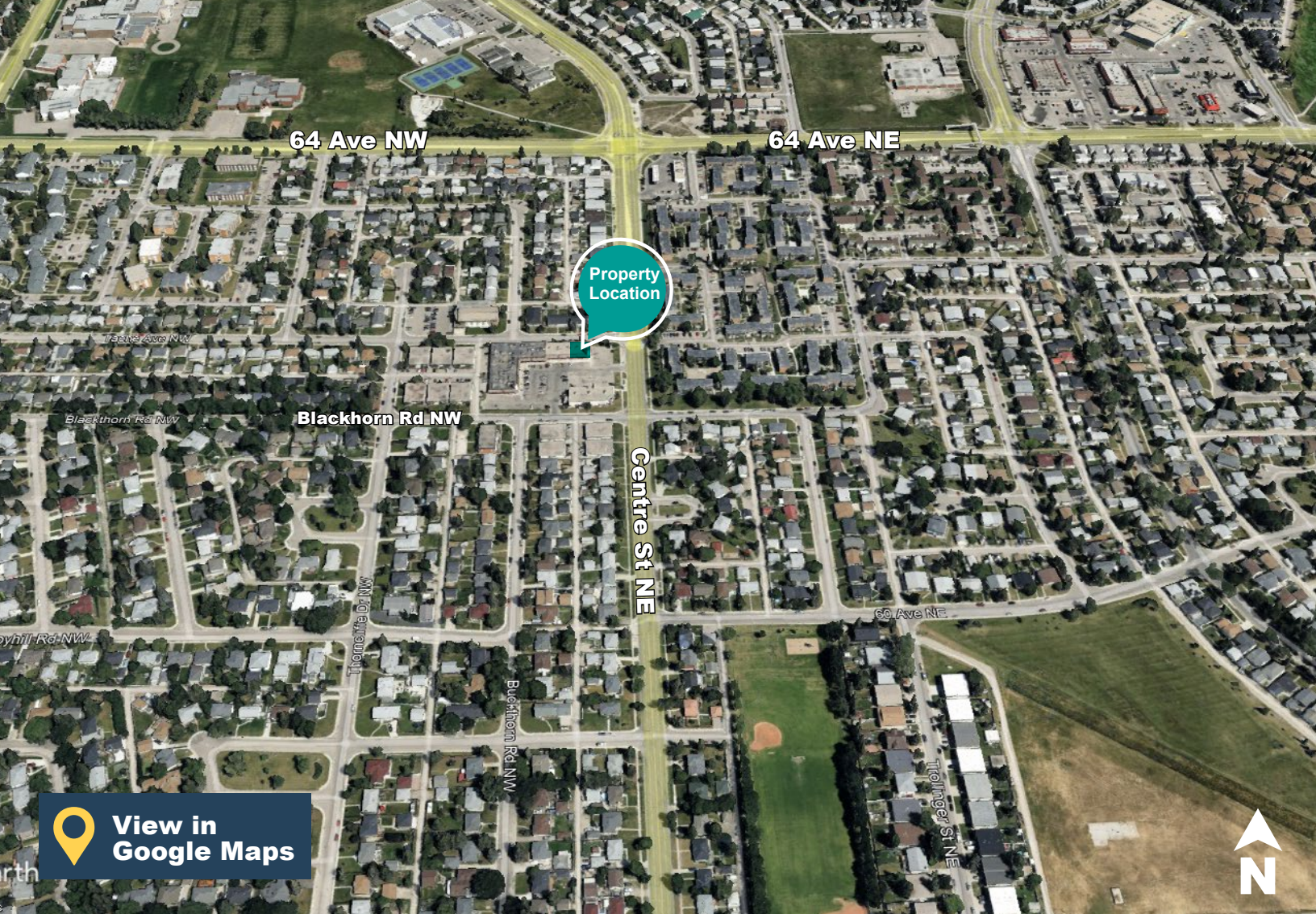
Signage: Fascia & Pylon

### Highlights

- Great unit in a high traffic area
- Vacant, quick move in available
- Easy access off of 64th Avenue NE with Transit directly in front of the property
- Pylon signage available
- Ample parking available
- Tenant Mix: Drug Store, Pub, Butcher, Liquor Store, Medical, Vet Clinic and Chinese Take-out

# Site Plan





Property Location



View in  
Google Maps

# Thank you for your interest!

For More Info.

**Mahmud Rahman**

P (403) 930-8651

E [mrahman@blackstonecommercial.com](mailto:mrahman@blackstonecommercial.com)

**Randy Wiens**

P (403) 930-8649

E [rwiens@blackstonecommercial.com](mailto:rwiens@blackstonecommercial.com)

Unit A210, 9705 Horton Road SW, Calgary, Alberta T2V 2X5 | P (403) 214-2344

This document has been prepared by Blackstone Commercial for advertising and general information only. Although information has been obtained from sources deemed reliable, Blackstone Commercial and / or their representatives, brokers or agents make no guarantees, representations or warranties of any kind, expressed or implied, regarding the information including, but not limited to, warranties of content, accuracy and reliability. Blackstone Commercial excludes unequivocally all inferred or implied terms, conditions and warranties arising out of this document and excludes all liability for loss and damages arising therefrom. © 2022, All rights reserved. This document is the copyrighted property of Blackstone Commercial.

[blackstonecommercial.com](http://blackstonecommercial.com)

 **Blackstone**  
Commercial Real Estate Services