

For Lease

510 Trans-Canada Highway, AB-1 | Strathmore, AB



Demographics



NEIGHBORHOOD
Strathmore



POPULATION
15,080



MEDIAN AGE
40



HOUSEHOLD INCOME
\$109,984

Building Details



PARKING
Ample Parking



YEAR BUILT
2000



TRAFFIC COUNT
14,650 VPD | Highway 1
13,290 VPD | Highway 1 & Second W



Unit A210, 9705 Horton Road SW,
Calgary, Alberta, T2V 2X5
P (403) 214-2344
blackstonecommercial.com

Country Lane Mall

Property Details

Size Available: Unit G - 2,162 SF
Unit H - 1,820 SF

Availability: Negotiable

Net Rate: Contact Associate

Op Costs: \$7.50 PSF

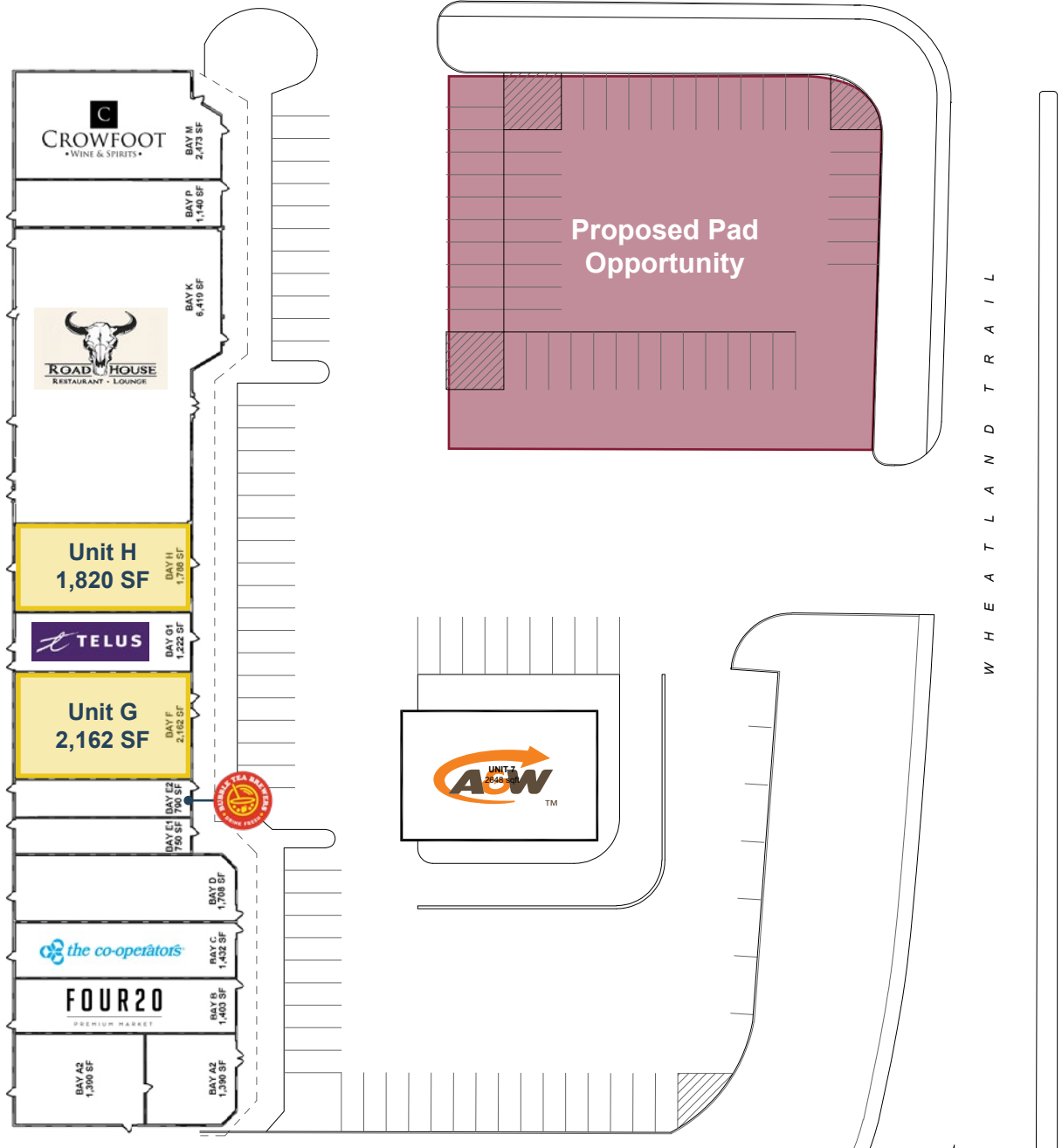
Zoning: C-SC

Highlights

- Single storey retail development located on major intersection in Strathmore, with easy access and great exposure to Highway 1
- Nearby Medical Centres
- PAD Site CRU with drive-thru options



Site Plan



Proposed Elevations (Subject to change)

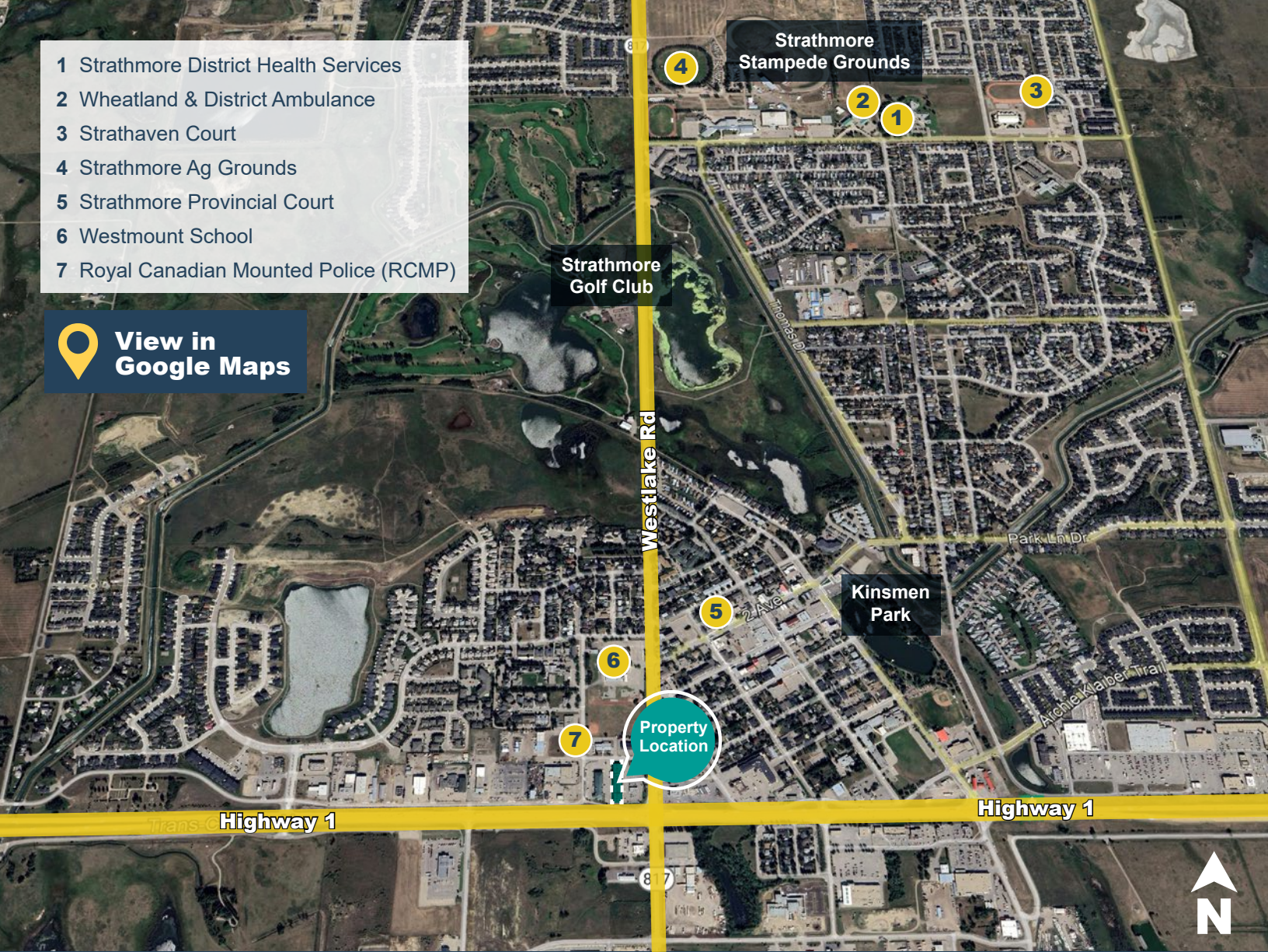


- ALUMINUM COMPOSITE PANELS
- WOOD BOARD SIDING
- STUCCO PAINT FINISH
- EXISTING STONE BASE



- 1 Strathmore District Health Services
- 2 Wheatland & District Ambulance
- 3 Strathaven Court
- 4 Strathmore Ag Grounds
- 5 Strathmore Provincial Court
- 6 Westmount School
- 7 Royal Canadian Mounted Police (RCMP)

 **View in
Google Maps**



Thank you for your interest!

For More Info.

Mahmud Rahman

P (403) 930-8651

E mrahman@blackstonecommercial.com

Randy Wiens

P (403) 930-8649

E rwiens@blackstonecommercial.com

Unit A210, 9705 Horton Road SW, Calgary, Alberta T2V 2X5 | P (403) 214-2344

This document has been prepared by Blackstone Commercial for advertising and general information only. Although information has been obtained from sources deemed reliable, Blackstone Commercial and / or their representatives, brokers or agents make no guarantees, representations or warranties of any kind, expressed or implied, regarding the information including, but not limited to, warranties of content, accuracy and reliability. Blackstone Commercial excludes unequivocally all inferred or implied terms, conditions and warranties arising out of this document and excludes all liability for loss and damages arising therefrom. © 2022, All rights reserved. This document is the copyrighted property of Blackstone Commercial.

blackstonecommercial.com

 **Blackstone**
Commercial Real Estate Services